

ESF Project "Establishment of a monitoring system for NEET persons"



The Ministry of Labor, Pension System, Family and Social Policy, Croatia



2017 – 2018

Objective: The practice was introduced to ensure comprehensive identification and documentation of young persons in NEET status, leveraging previously unconnected data sources. This initiative serves as a foundation for designing outreach and activation measures aimed at reintegrating young people into education or the labour market.

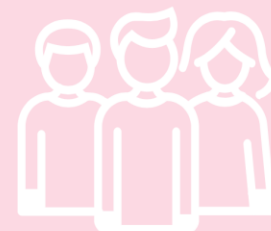
Target group: young persons aged 15–29 in NEET status.

Key components of the practice: The system was established through an Agreement on Business Cooperation for data exchange among key stakeholders, including the Ministry of Labour, the Ministry of Science and Education, the Croatian Employment Service, and the Croatian Pension Insurance Institute.

Key outcomes: The practice facilitated insight into effective data collection and collaboration among government bodies, showcasing a transferable model that extends beyond its initial target group.

Evidence of success: Although the project did not fully develop a comprehensive monitoring system for young people, it successfully implemented a mapping system for individuals aged 15–29. This approach, despite its limitations, provides essential insights into a group often overlooked in data collection and analysis.

[Find out more](#)



Collection and analysis of data on NEETs registered as unemployed



Croatian Employment Service (CES), Croatia



ongoing

Objective: To collect and process data on young people registered as unemployed to monitor the implementation of the Youth Guarantee and guide future actions targeting this group.

Target group: young NEETs registered as unemployed.

Key components of the practice:

- The practice is an ongoing process managed by the CES Analytics & Statistics Department.
- Data is collected and processed from the database of registered unemployed individuals. Key aspects observed include:
 - Status upon registration as unemployed.
 - Duration of unemployment.
 - Exit outcomes (e.g., employment, active employment policy measures, education, inactivity).
 - Status a few months after exiting unemployment.
- This data is compiled into statistical forms and submitted to the European Commission, which uses it to prepare analytical report

Key outcomes: the practice data collection and analysis methods are adaptable and transferable to other target groups and areas.

Evidence of success:

- This practice provides the most comprehensive nationally available data on young NEETs.
- It supports the European Commission with data for monitoring the Youth Guarantee and informs future policy and action planning.

[Find out more](#)